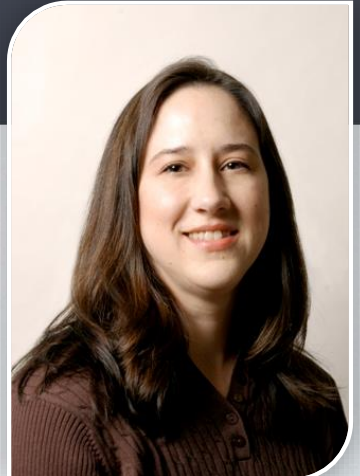


STEM SPOTLIGHT

Amy de Jongh Curry

Associate Professor, Biomedical Engineering
University of Memphis

PhD in Biomedical Engineering
Bachelor and Master of Science, Electrical Engineering
University of Memphis



Q How did you select your college major?

A I was good at math and an engineering degree seemed interesting. I have a BS and MS in Electrical Engineering, then moved to Biomedical for PhD.

Q What was the biggest influence in your selection of major/career?

A Academic interest in math and science.

Q If you could go back to high school and select any elective course to take that would have better prepared you for college, what would it be?

A An advanced science course.

Q What is your favorite aspect of your job?

A Working with students, both in the classroom and in the research lab.





Q How do you/your company make a positive impact on society/our community?

A At UM, we prepare the next generation of engineers.

Q What is the most interesting thing you have been able to do in your career?

A My research is a bit shocking—literally. I work on improving cardiac defibrillators and simulate electric shocks during defibrillation in a computer model of the human body.

Q What makes you get up each morning excited about your profession?

A Knowing that I can make a positive impact for students and their career aspirations.

Q What advice would you like to share with K-12 students who are considering your profession?

A Engineering is a rewarding career—you have direct, meaningful impact on people and how they live their day-to-day lives. Engineering is also a challenging career—you learn and discover new technologies as part of your job. Engineering is never boring.