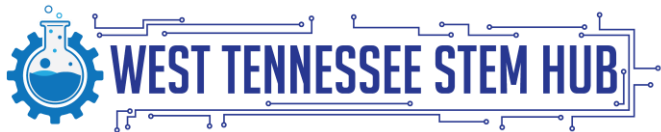


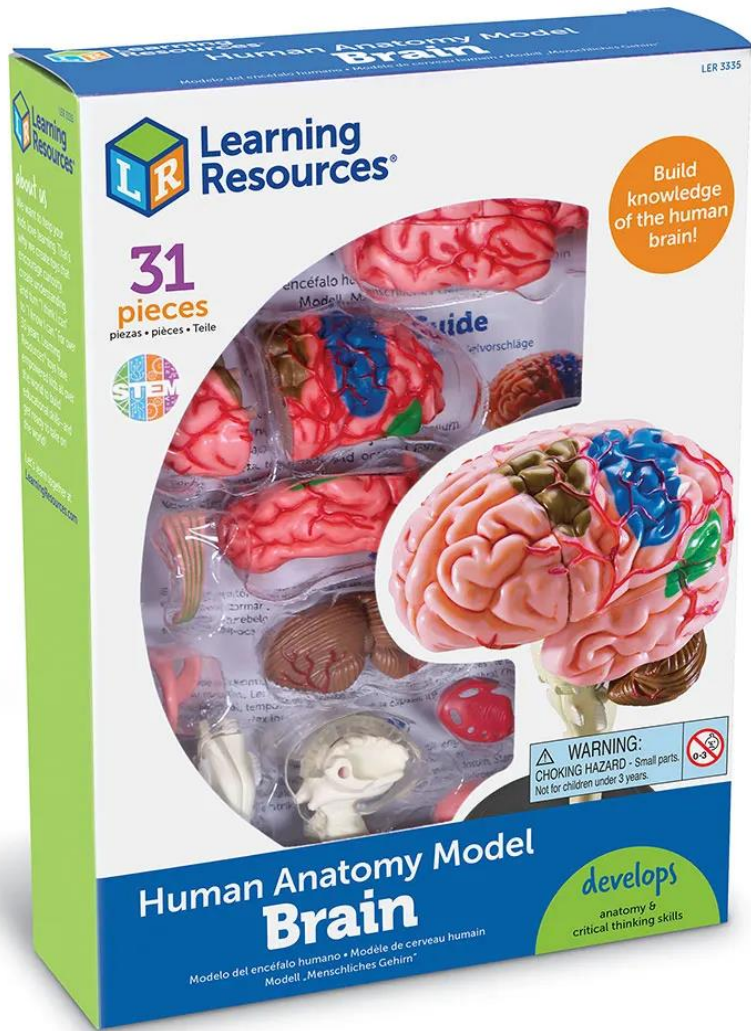
LEARNING RESOURCES: HUMAN ANATOMY MODEL BRAIN

BY: CAMILLE ROBINSON



WHAT DOES THIS KIT CONSIST OF?

- Features cerebellum, frontal, parietal, temporal and occipital lobes, corpus callosum, brain stem, hippocampus, ventricles, insula, corpus striatum, internal capsule and lentiform nucleus.
- Perfect in a nervous system center for a deeper understanding of how the parts of the brain work together.
- Includes 31-Piece model, display stand, and guide with facts and photo-illustrated assembly instructions.
- Measures 3.8 inches tall after assembly.

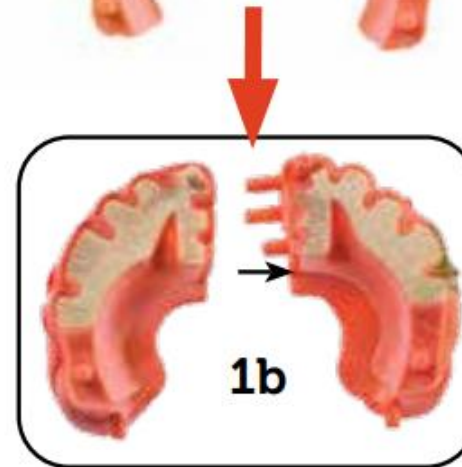
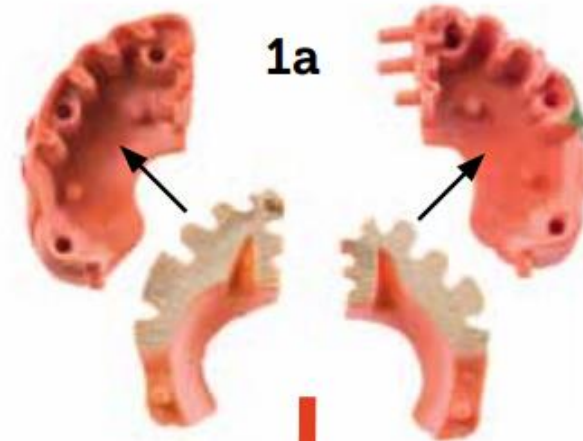
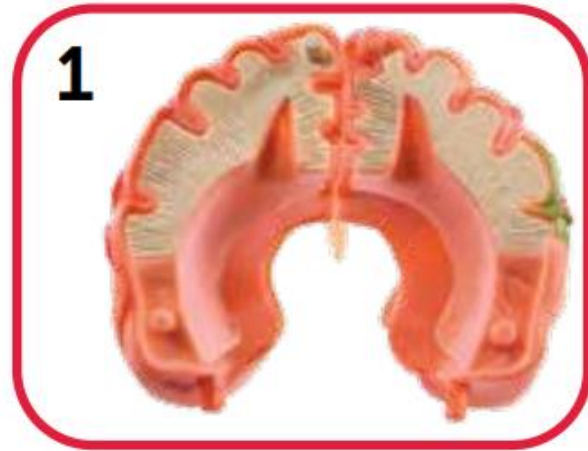


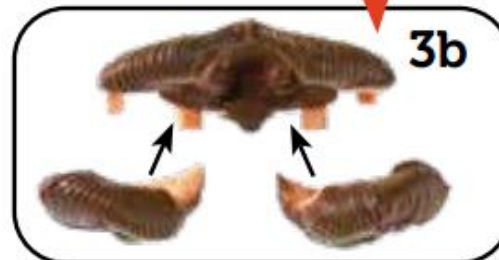
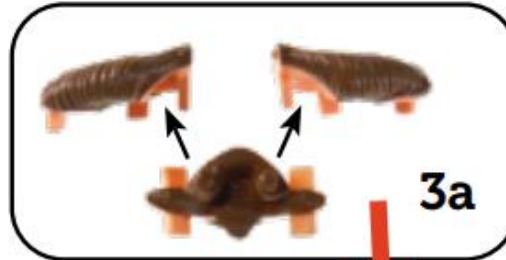
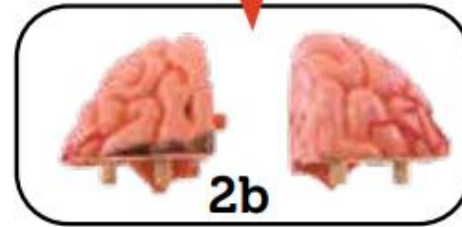
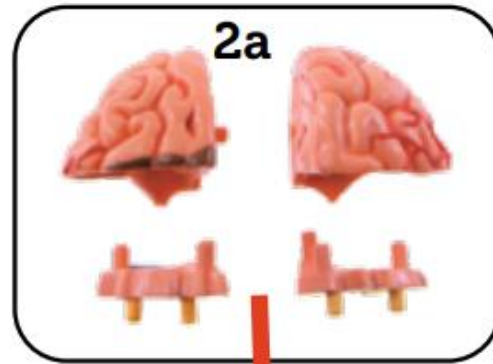
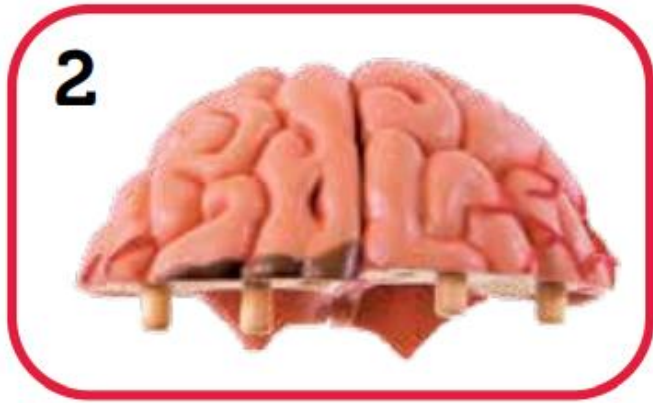
CONTENT COVERED BY THIS KIT

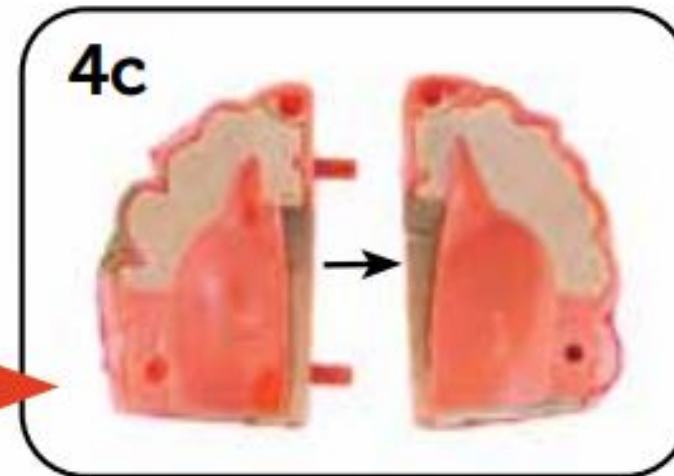
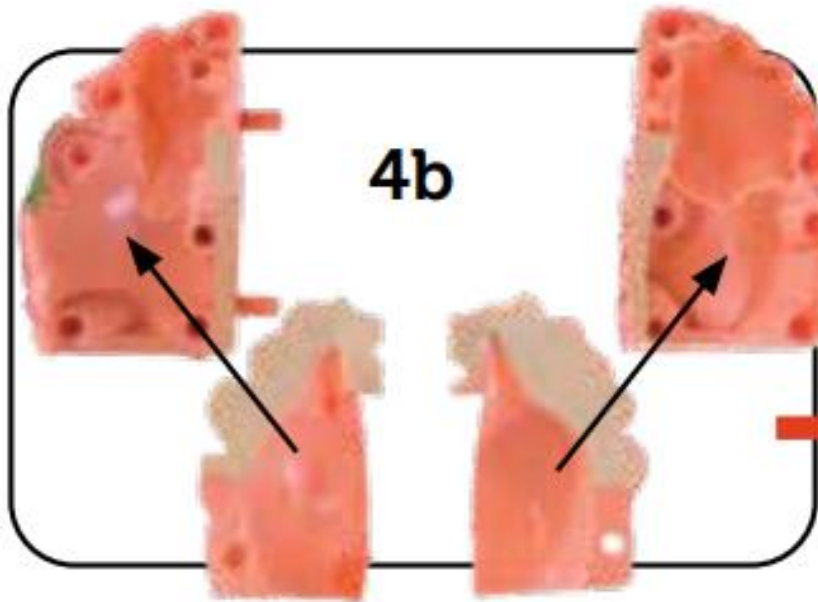
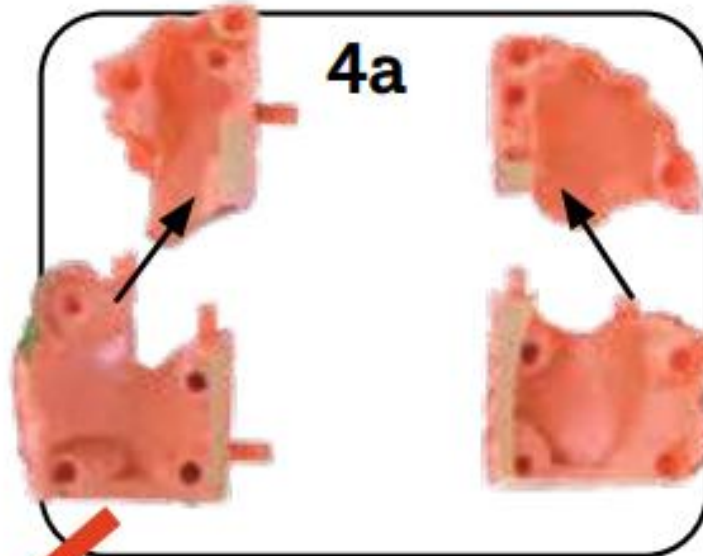
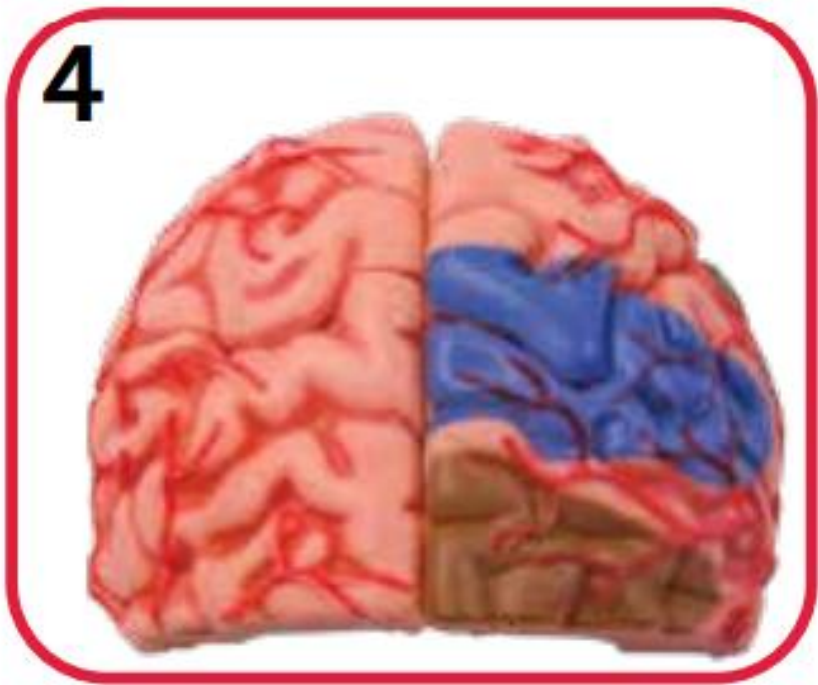
**Model
Assembly**

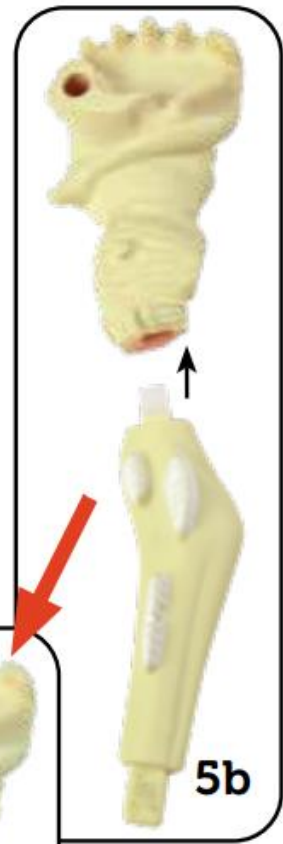
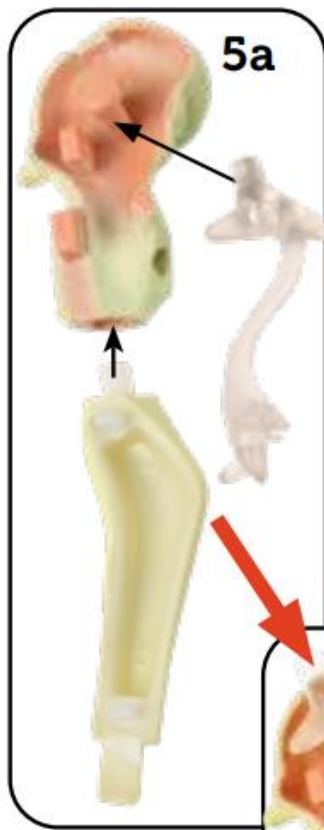
Definitions

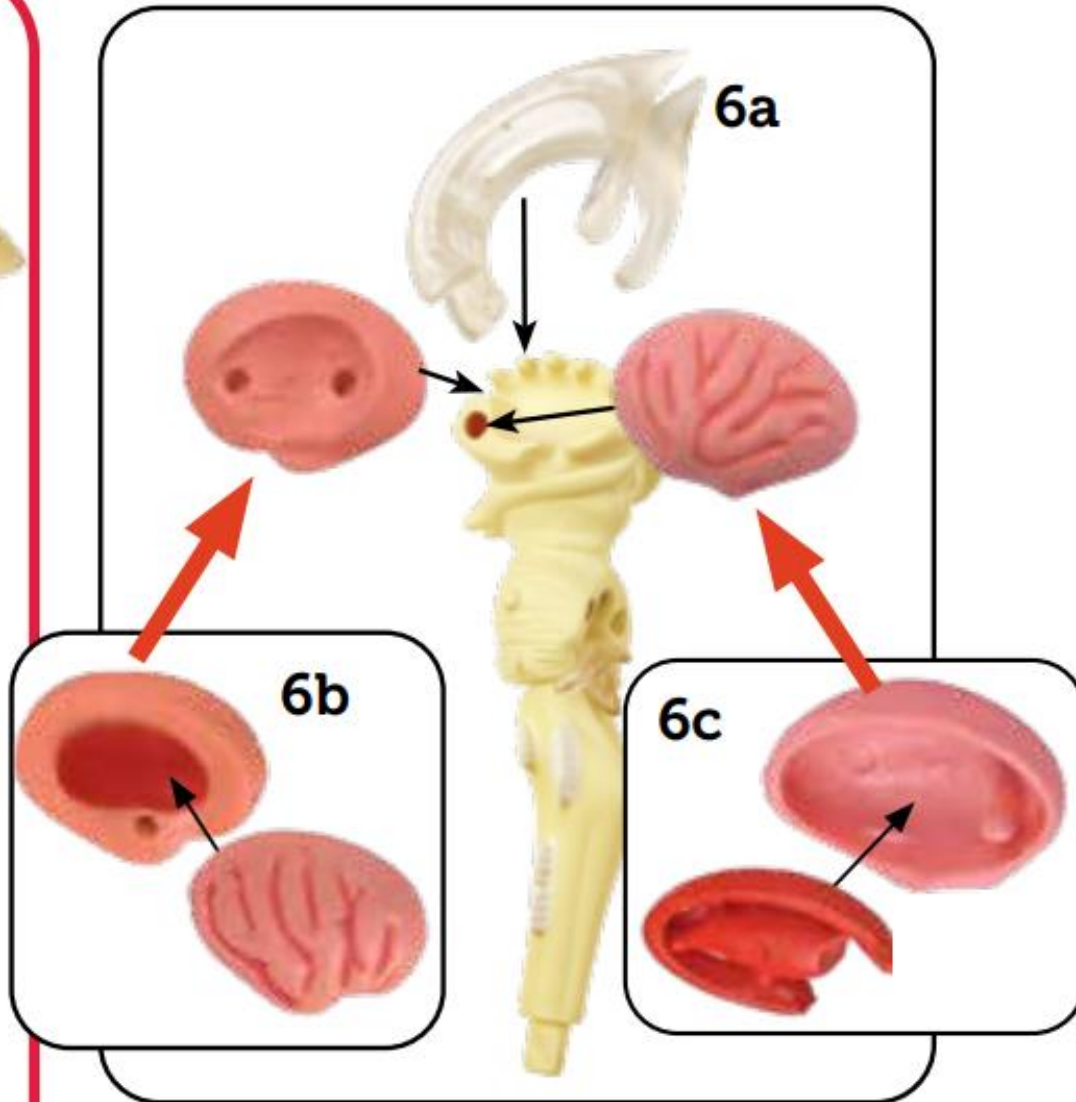
MODEL ASSEMBLY



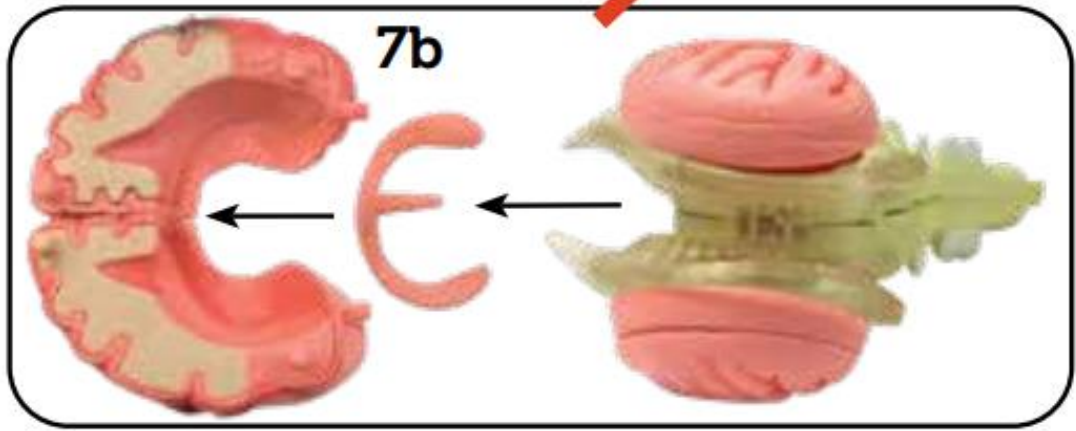
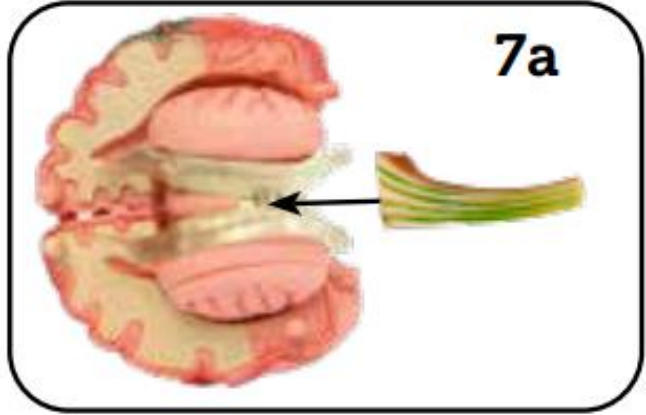


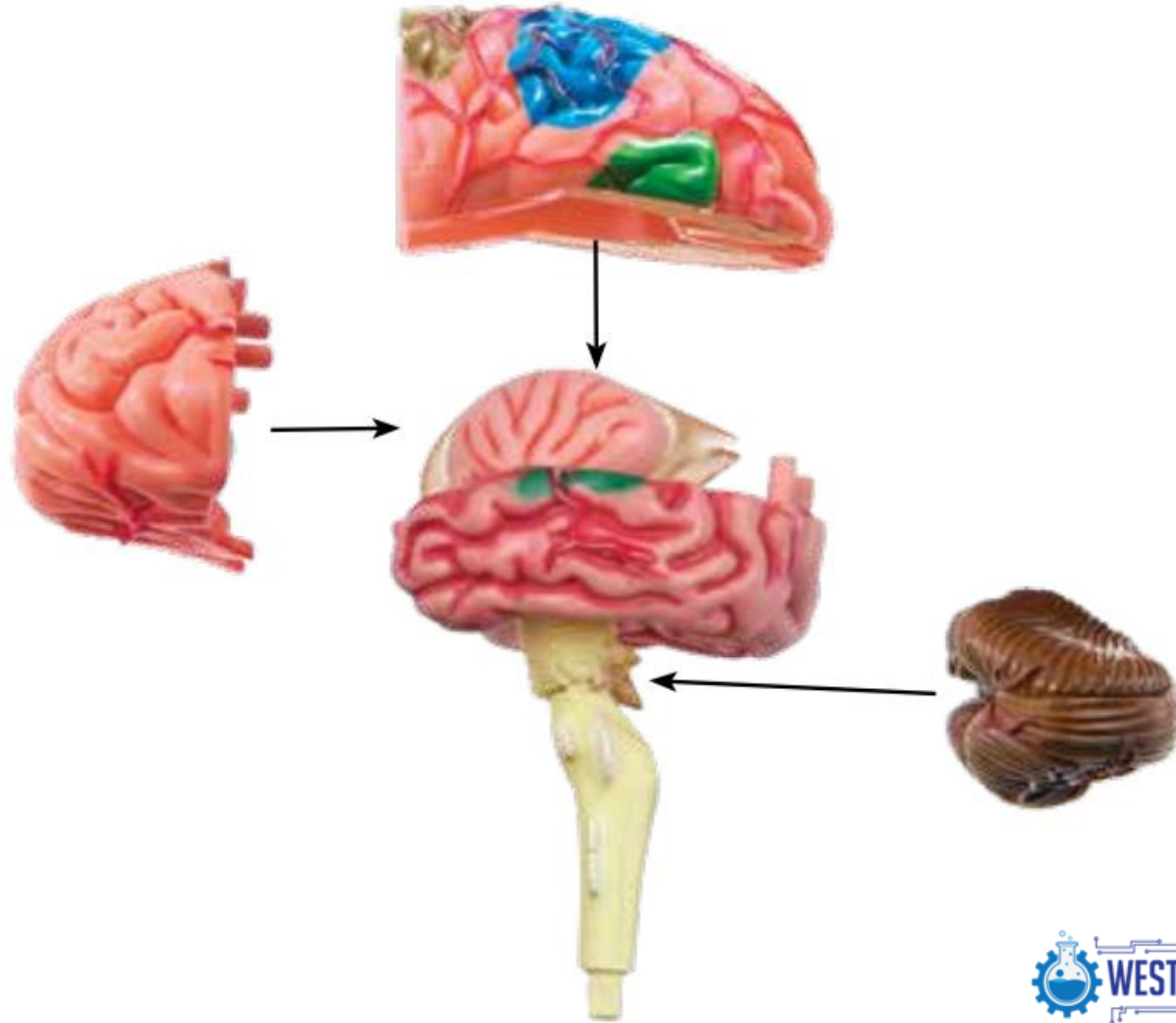






7





DEFINITIONS



- **Cerebellum** – Coordinates body movement and maintains the body's balance and equilibrium.



- **Frontal lobe** - Controls many functions including movement, memory, language, social behavior, problem solving, decision making, emotion, and personality.

DEFINITIONS (CONT.)



- **Parietal lobe** – Interprets sensory information of touch, pressure, temperature, and pain; involved with language comprehension.



- **Temporal lobe** – Controls auditory perception, speech, language comprehension, and visual recognition.

DEFINITIONS (CONT.)



- **Occipital lobe** – Processes visual information and controls visual perception, including color recognition, sending the information to the parietal and temporal lobes.



- **Corpus callosum** – Connects and communicates between the left and right sides of the brain.

DEFINITIONS (CONT.)



- **Brain stem** – Contains the medulla oblongata, pons, and midbrain; connects the spinal cord and controls some involuntary movements such as breathing and heart rate.



- **Hippocampus** – The part of the limbic system that involves memory retention and spatial orientation.

DEFINITIONS (CONT.)

- **Ventricles** – Hollow chamber that contains cerebrospinal fluid allowing it to move around the brain.
- **Insula** – Interprets experiences of pain, disgust, happiness, sadness, taste, and smell.



DEFINITIONS (CONT.)



- **Corpus striatum** – Connects the basal ganglia system with the rest of the brain to coordinate functions such as motor control, cognition, learning, and emotions.



- **Internal capsule** – Contains fibers that connect the primary sensory areas of the cortex with the rest of the nervous system.

DEFINITIONS (CONT.)



- **Lentiform nucleus** – Part of the basal ganglia composed of the globus pallidus and the putamen, which aids in learning reinforcement.

SOURCES

- <https://www.learningresources.com/catalog/product/view/id/5138/s/item-anatomy-model-brain/> (Slide 1-4)
- <https://www.learningresources.com/amfile/file/download/file/10621/product/5138/> (Slide 5-11) (Assembly Guide)
- <https://www.learningresources.com/amfile/file/download/file/4129/product/5138/> (Slide 12-18) (Activity Guide)