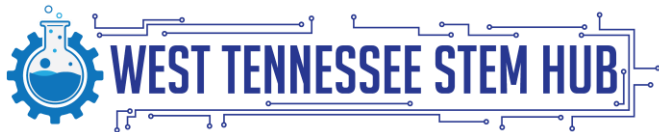




LEARNING RESOURCES: HUMAN ANATOMY MODEL HEART

BY: CAMILLE ROBINSON



WHAT DOES THIS KIT CONSIST OF?

- Features superior and inferior venae cavae, right and left atria, tricuspid valve, right and left ventricles, pulmonary artery, mitral valve, aortic valve and aorta.
- Includes 29-piece plastic model, display stand, and guide with facts and photo-illustrated assembly instructions-great for centers.
- Measures 5 inches tall after assembly.

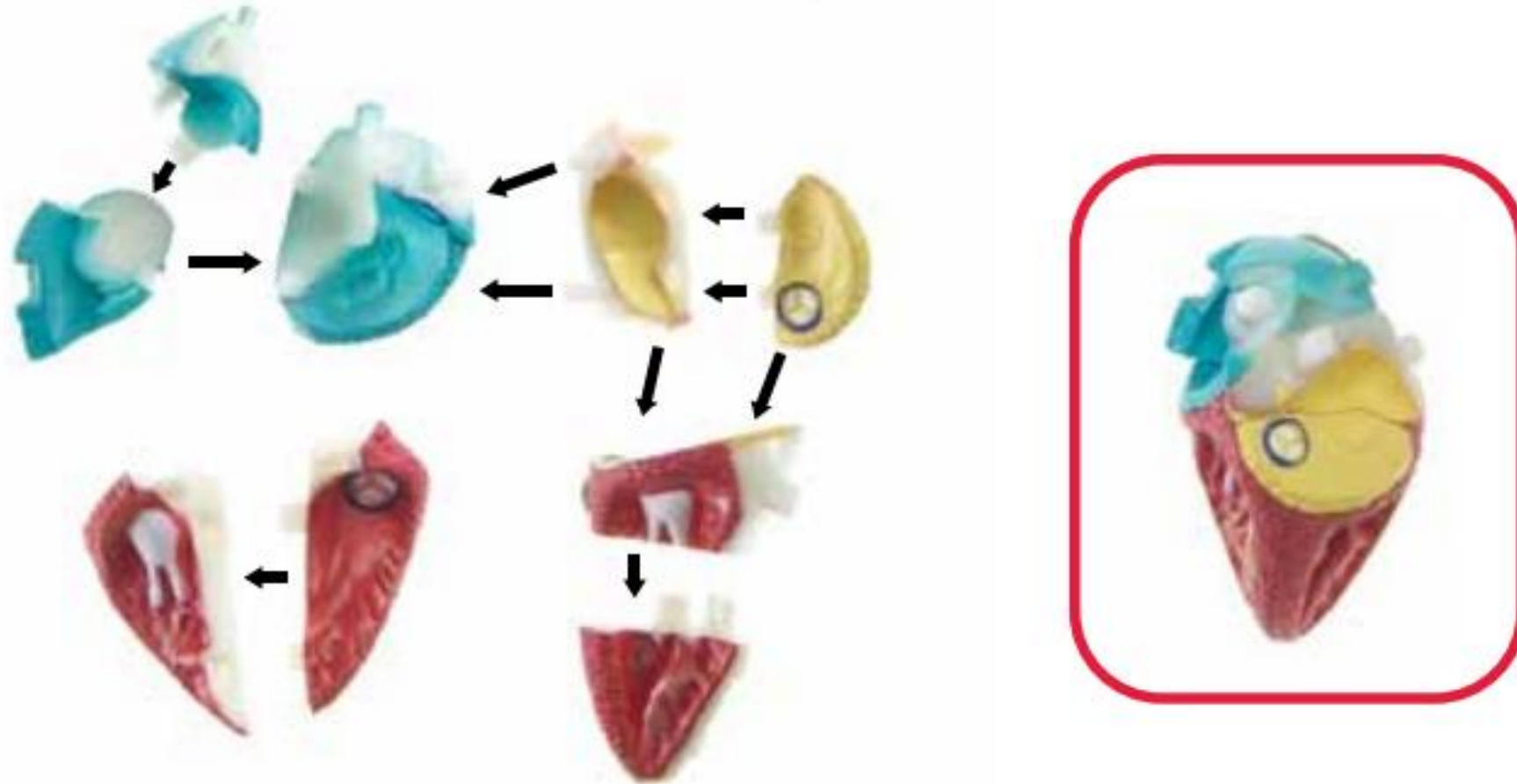


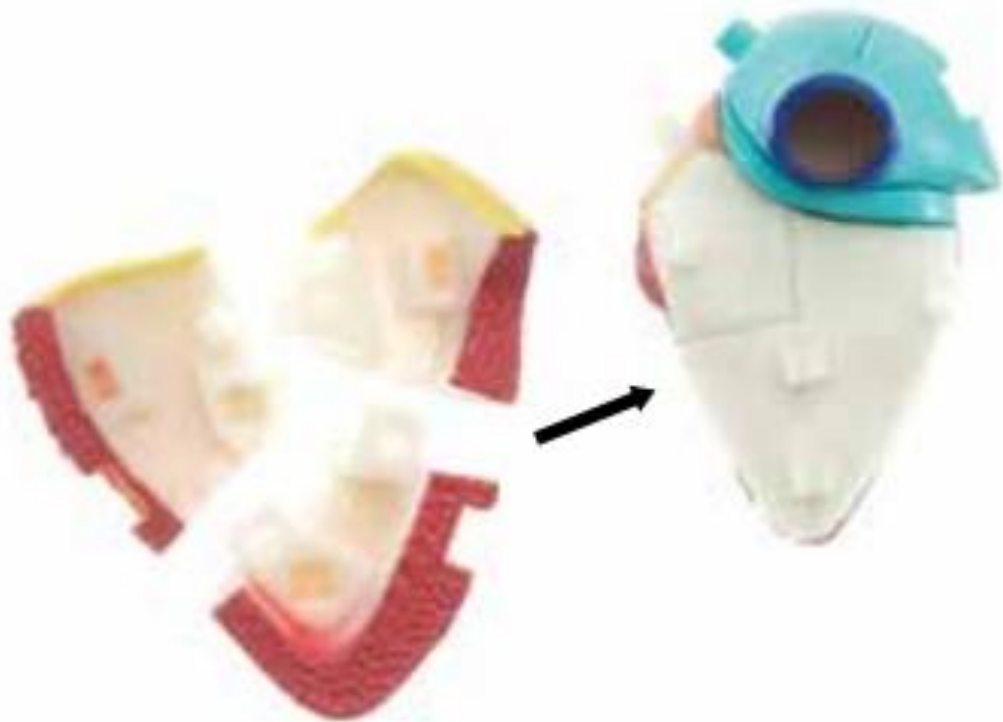
CONTENT COVERED BY THIS KIT

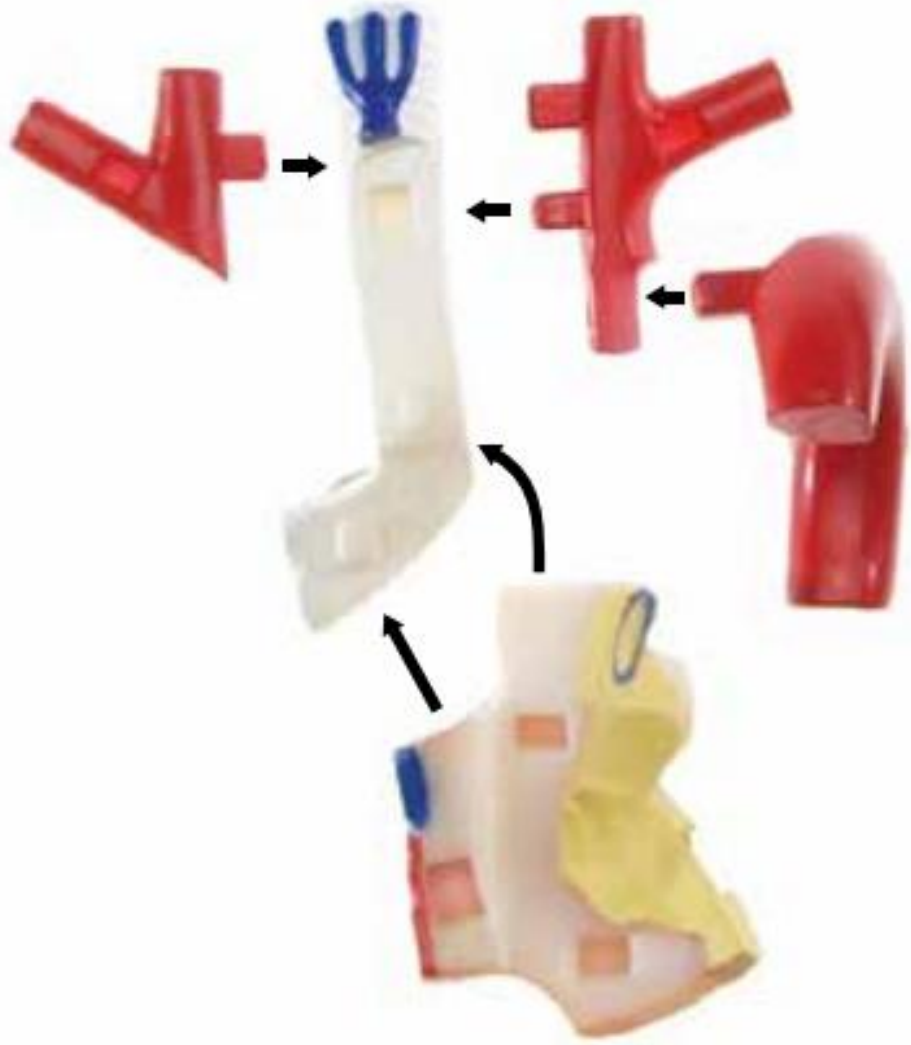
**Model
Assembly**

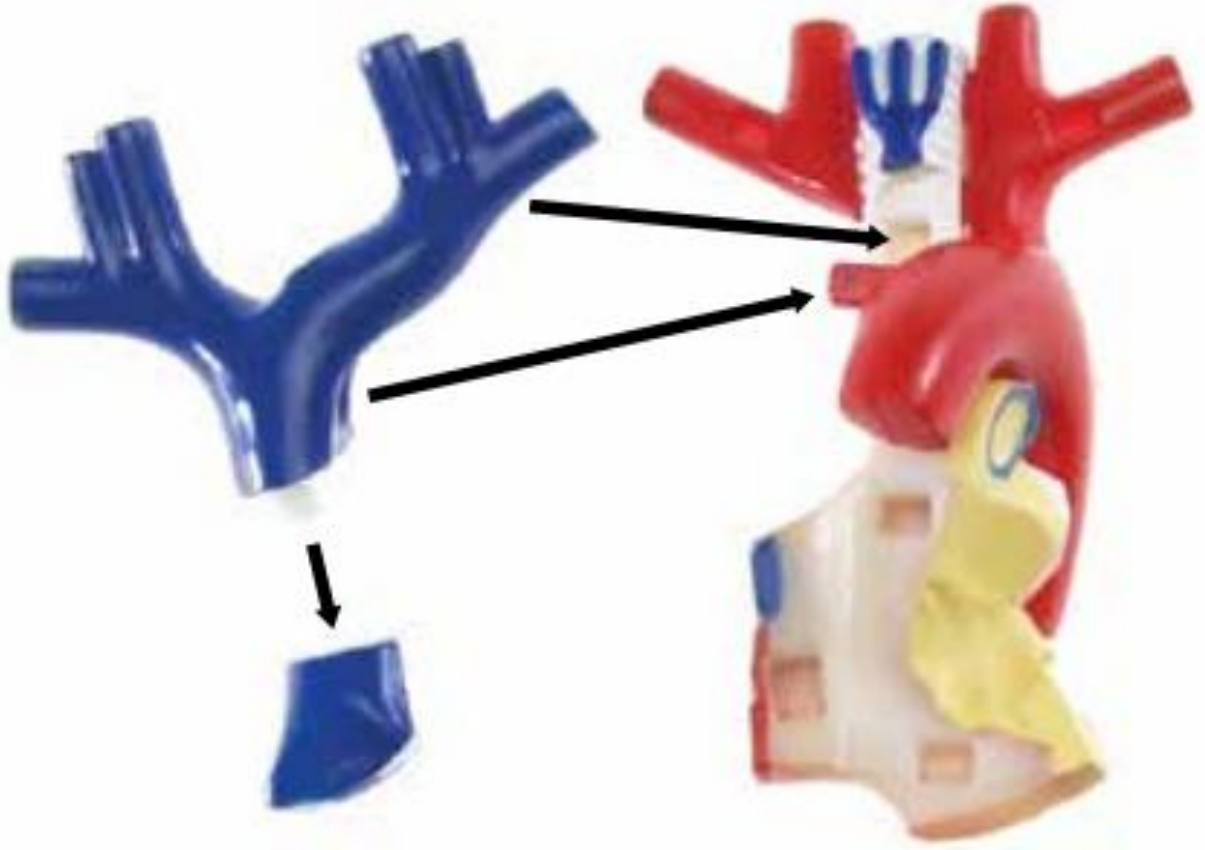
Definitions

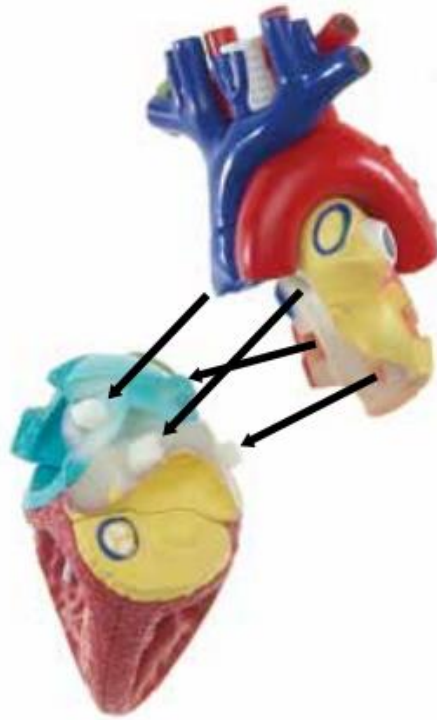
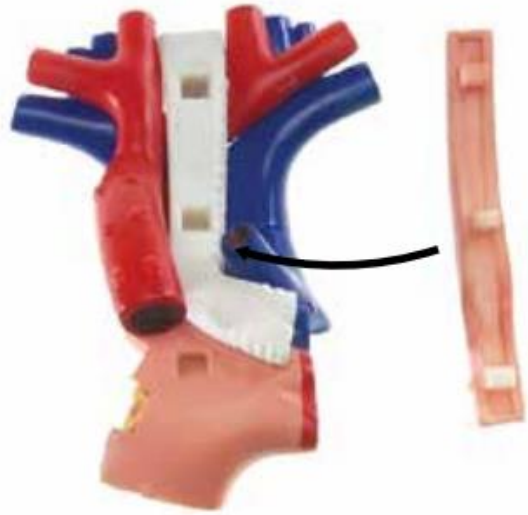
MODEL ASSEMBLY

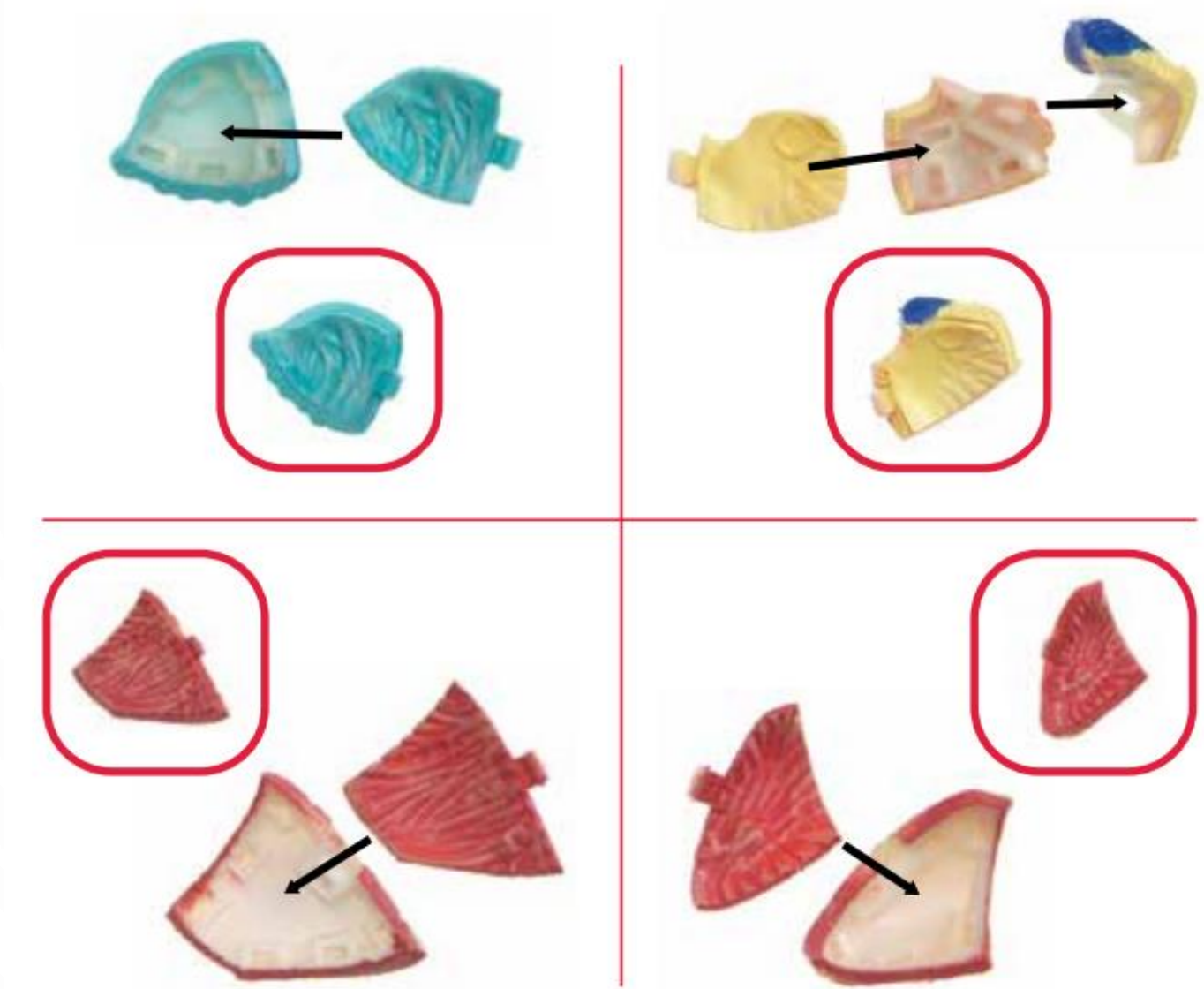


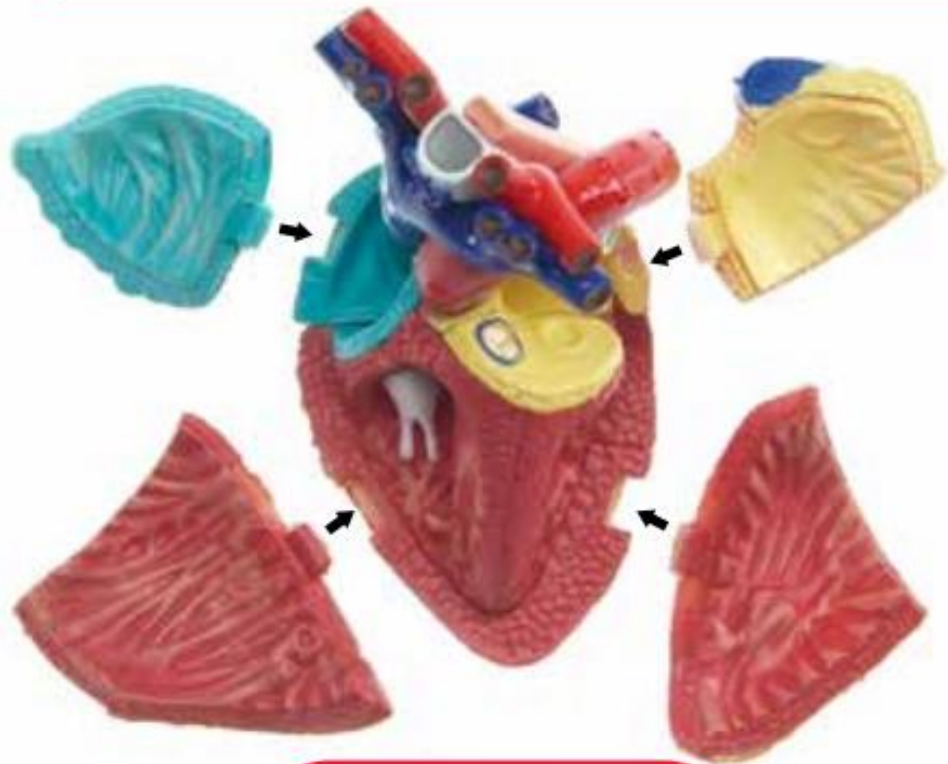












**superior
vena cava**
vena cava superior
veine cave supérieur
Vena Cava superio

**inferior
vena cava**
vena cava inferior
veine cave inférieure
Vena Cava inferior

**right
atrium**
auricula derecha
Atrium droit
Rechter Vorhof

**tricuspid
valve**
válvula tricúspide
valve tricuspide
Trikuspidalklappe

**right
ventricle**
ventriculo derecho
ventricule droit
Rechte Herzkammer

aorta
aorta
aorte
Aorta

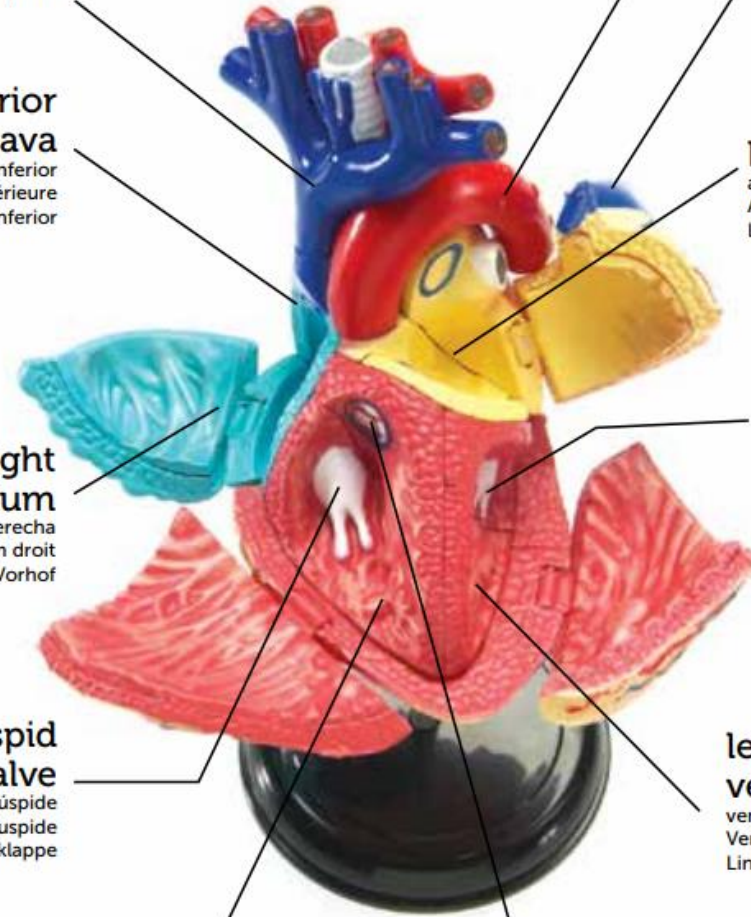
**pulmonary
artery**
arteria pulmonar
Artère pulmonaire

left atrium
auricula izquierda
Atrium gauche
Linker Vorhof

**mitral
valve**
válvula mitral
valve mitrale
Mitralklappe

**left
ventricle**
ventriculo izquierdo
Ventricule gauche
Linke Herzkammer

**pulmonary
valve**
válvula pulmonar
valve pulmonaire
Pulmonalklappe



DEFINITIONS

- Superior vena cava – Large vein that carries oxygen-poor blood from the upper body into the right atrium.
- Inferior vena cava – Large vein that carries oxygen-poor blood from the lower body into the right atrium.
- Right atrium – Upper-right chamber of the heart that directs oxygen-poor blood from the superior and inferior vena cava to the right ventricle.

DEFINITIONS (CONT.)

- Tricuspid valve – Separates the right atrium and right ventricle, preventing blood from flowing in the wrong direction.
- Right ventricle - Lower-right chamber of the heart that collects oxygen-poor blood from the right atrium, pumping it through the pulmonary valve into the pulmonary artery.
- Pulmonary valve – Located between the right ventricles and pulmonary artery that prevents blood from flowing in the wrong direction.

DEFINITIONS (CONT.)

- Pulmonary artery – The only artery that carries oxygen-poor blood from the heart directly to the lungs.
- Left atrium - Upper-left chamber of the heart that pumps oxygen-rich blood from the lungs into the left ventricle.
- Mitral valve - Separates the left atrium and left ventricle, preventing blood from flowing in the wrong direction.

DEFINITIONS (CONT.)

- Left ventricle – Lower-left chamber of the heart that pumps blood from the left atrium through the aorta to the entire body, except for the lungs.
- Aorta – Largest artery in the body; carries oxygen-rich blood from the left ventricle to the rest of the body, except for the lungs.

SOURCES

- <https://www.learningresources.com/catalog/product/view/id/5618/s/item-anatomy-model-heart/> (Slide 1-4)
- <https://www.learningresources.com/amfile/file/download/file/10630/product/5618/> (Slide 5-12) (Assembly Guide)
- <https://www.learningresources.com/amfile/file/download/file/4126/product/5618/> (Slide 13-16) (Activity Guide)